

### **Coulisse presents new additions to Absolute Control**

At the R+T 2009 in Stuttgart Coulisse successfully introduced Absolute Control, a unique system for the automation of blind systems developed by Coulisse itself. The motors are easy to install, programme and operate. Coulisse now presents two new motors to complete the range. With the new middle motor and the tilt-only motor for venetian blinds there are now even more possibilities.



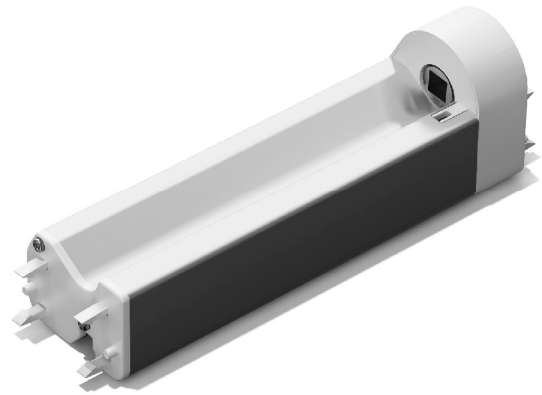
#### **Middle motor**

The new middle motor is suitable for roman blinds, 20 and 25 mm pleated blinds and venetian blinds (25 mm). The motor is completely integrated in the rail. This eliminates the necessity for extra components such as stoppers or receivers.



#### **Tilt-only motor venetian**

With the new tilt-only motor for venetian blinds the motor can be placed on every desired position in the head rail by simply sliding it over the shaft. The motor can now also be placed in the middle without having to cut the shaft.



#### **Absolute Control for the automation of blinds**

With a single remote control different blind systems can be operated. The quiet motors are compact and can be integrated into the systems in an attractive way. The motors work wirelessly on radiofrequency and can therefore easily be installed, programmed and operated from a distance. The remote control is easy to operate and fits the hand like a glove due to its ergonomic shape. Coulisse patented several unique technical features. Unique are the panel blind motor and the driving technique of the vertical blind motor.

**End of message**